



Foster Home Fire Inspection Protocol





Foster Home Fire and Health Inspection Protocol

July 1, 2024



The SC Office of State Fire Marshal will perform inspections of foster and adoption homes upon request of DSS or approved third party providers. The scope of the inspection will be limited to the following items:

(Explanatory comments are in red.)

1. The building or structure must be designed and constructed with the intent to be used as a dwelling (home) per applicable statutes, regulations and state adopted building codes.



The home must be built to the South Carolina Residential Code or HUD standards. Campers or storage buildings converted to homes do not meet these requirements.

2. The home shall have approved address numbers placed in a position that is plainly legible and visible from the street. When numbers placed on the home are not visible from the street, numbers may be required to be placed on a mailbox or address sign that is visible from the street.
 - a. Address numbers shall be visible from either direction of approach.
 - b. Address number shall be a minimum of 3 inches high with a minimum stroke width of 0.5 inch and shall contrast with their background.



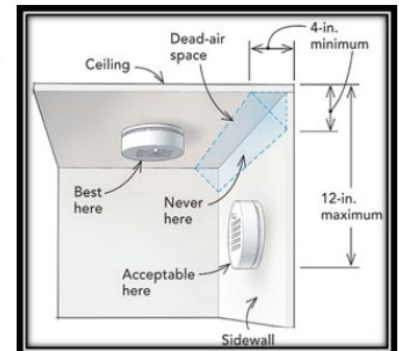
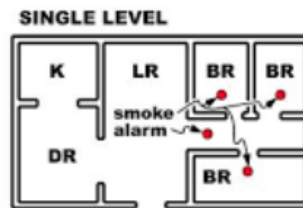
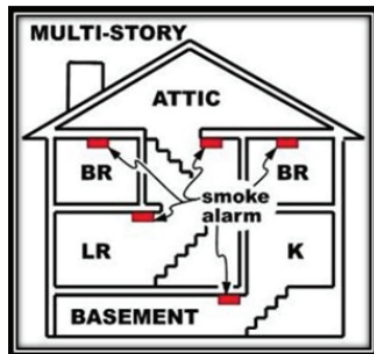


Foster Home Fire and Health Inspection Protocol

July 1, 2024



3. Each foster home shall maintain the means of egress as provided at the time of original construction.
 - a. Hallways, doorways, and walkways must be maintained free of obstructions that could impair its use.
 - b. Opening the door must take no more than 3 separate actions.
 - c. Locks that require keys, tools, or special knowledge to open from the inside of the home are not allowed.
 - d. Security latches, chains, and all other locks must be installed no more than 48" from the floor.
4. Listed smoke alarms shall be installed and maintained in accordance with the manufacturer's installation instructions and in the following locations:
 - a. On the ceiling or wall outside of each separate sleeping area in the immediate vicinity of bedrooms; and
 - b. In each room used for sleeping purposes; and
 - c. In each habitable story within a dwelling.



A "Listed Smoke Alarm" has been tested to ensure it meets minimum industry standards. "Listed" alarms will have either the UL or ETL mark on them.

*To learn more about where to install smoke alarms, watch this video:
<https://youtu.be/8UNzcS02l8w?si=zLrTnf4XLsV6QHZj>*

5. Listed smoke alarms shall be powered from one of the following:
 - a. the electrical system of the home as the primary power source and a battery as a secondary power source.
 - b. a maintenance free, tamper resistant, battery rated for a 10-year life,
 - c. replaceable batteries when the alarm is part of a listed, wireless interconnected smoke alarm system.



Foster Home Fire and Health Inspection Protocol



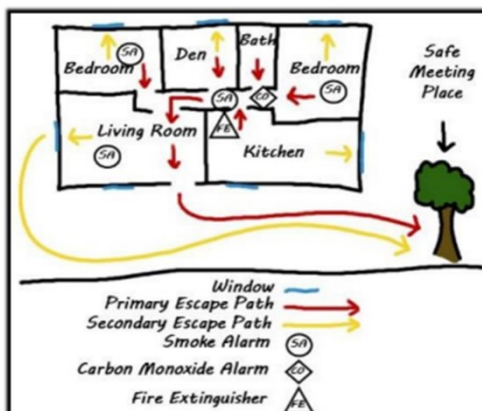
July 1, 2024

6. At least one portable fire extinguisher with a minimum classification of 2A:10BC shall be located near cooking areas of the home.
 - a. The fire extinguisher should be located in a permanent location, along a path of travel towards an exit, and not so near the stove that you would not be able to reach it if the stove top is on fire.
 - b. The fire extinguisher must be visually inspected at least every 3 months to verify that it is in its permanent location and that the needle is “in the green.”
 - c. The fire extinguisher must be replaced or serviced by a SC Licensed Fire Equipment Dealer at least each 6 years from the manufactured date, and anytime the needle is found to be not “in the green.”



The correct size, 2A:10BC, is larger than the 10BC and 1A:10BC fire extinguishers and it typically has a flexible hose and nozzle which requires 2 hands to operate. You can operate the fire extinguisher by remembering the acronym PASS- Pull, Aim, Squeeze and Sweep. To watch a video on how to operate a fire extinguisher, click here: <https://youtu.be/GVBamXXVD30?si=jy3ryU4li-WAmLVC>

7. A fire escape plan consisting of a sketch of the floor plan of the home that shows 2 ways out of each bedroom and a safe meeting place outside, must be developed. The plan must be posted in the home where it can easily be viewed.



Plan two ways out of every room, including windows as a method of escape. Discuss closing a bedroom door and going out of the window to avoid passing through the smoke.

Identify a meeting place outside of the home. Discuss not going back into the home to look for other people, valuables, or pets.

Mark the locations of smoke alarms, carbon monoxide alarms, and fire extinguisher.



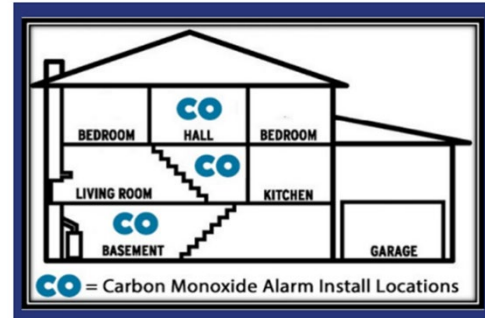
Foster Home Fire and Health Inspection Protocol



July 1, 2024

8. If the home has fuel-fired appliances, a fireplace, wood stove, or an attached garage, then listed carbon monoxide alarms shall be installed and maintained outside of each separate sleeping area and on each level of the home. If a bedroom contains a source of carbon monoxide, then a listed carbon monoxide alarm must be installed in that bedroom also.

Carbon Monoxide Alarms are required when the home contains a source of carbon monoxide, such as a fireplace, wood stove, fuel-fired (gas) appliances, or an attached garage.



9. (Initial Inspection Only)

The following health and sanitation requirements will be verified:

- Private well water shall be negative for Coliform and E.Coli.
 - There must be no evidence of septic hazards.
 - Pet inoculations are required for dogs, cats, and ferrets.
10. All heating appliances and devices must be listed and installed per the manufacturer's instructions.
- Electric space heaters must be equipped with a tip-over safety switch, be plugged directly into an electrical outlet, and be positioned at least 3 feet away from combustible objects and materials on all sides.
 - Fireplaces shall be equipped with screens, partitions, or other means to contain embers and protect children from burns.
 - Portable unvented fuel-fired heating equipment shall be prohibited in all foster homes.





Foster Home Fire and Health Inspection Protocol

July 1, 2024



11. Each bedroom must have an operable door that closes to provides compartmentation that will protect occupants from smoke and heat in case of a fire event. Side hinged, swinging doors must latch. Barn doors, pocket doors or similar doors that do not latch much close tightly to prevent the passage of smoke around the edges.

*To learn of the benefit of a closed door, watch this “Close Before You Doze” video:
<https://youtu.be/bSP03BE74WA?si=ZbsSwcYnlskoCdFz>*

Alternative Method of Compliance: A fire protection sprinkler system installed in accordance with the requirements of either the SC Residential Code, NFPA 13D, NFPA 13R, or NFPA 13 may be accepted as an alternative to the compartmentation requirement (item 11) and the emergency escape and rescue requirement (item 12). Requests for alternative methods of compliance will be evaluated on a case-by-case basis.

12. All bedrooms below the fourth story shall have at least one window or door that opens from the inside and leads directly outside. This window or door must be accessible and available for immediate use for emergency escape and rescue.
 - a. This window opening must provide a clear opening space of at least 24 inches or greater in height, 20 inches or greater in width, and provide at least 5.0 square feet when on the first floor or 5.7 square feet when on the second floor or higher.

Exception: If the window does not meet the minimum size requirements described above, the window can still qualify as an emergency escape window provided that it opens to provide a large enough space for a typical adult to escape and the home has interconnected smoke alarms in all of the required spaces.

Measure the clear opening width of the space available to crawl through when the window is fully opened. Measure the clear opening height of the space available to crawl through when the window is fully opened.

$$\frac{\text{_____ inches (width)} \times \text{_____ inches (height)}}{144} = \text{Sq Ft}$$

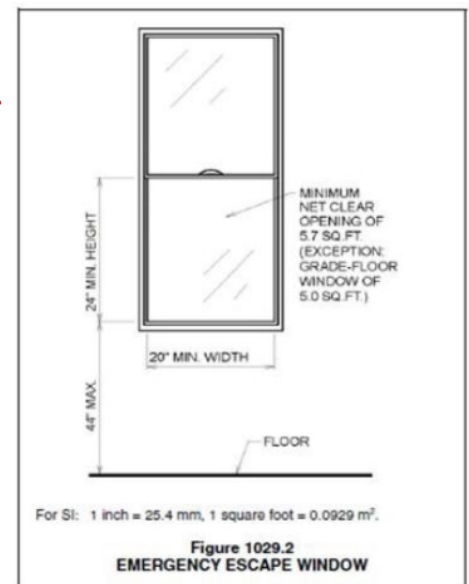
Window must provide:

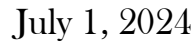
5.0 ft² (of opening space on grade level.

5.7 ft² of opening space otherwise.

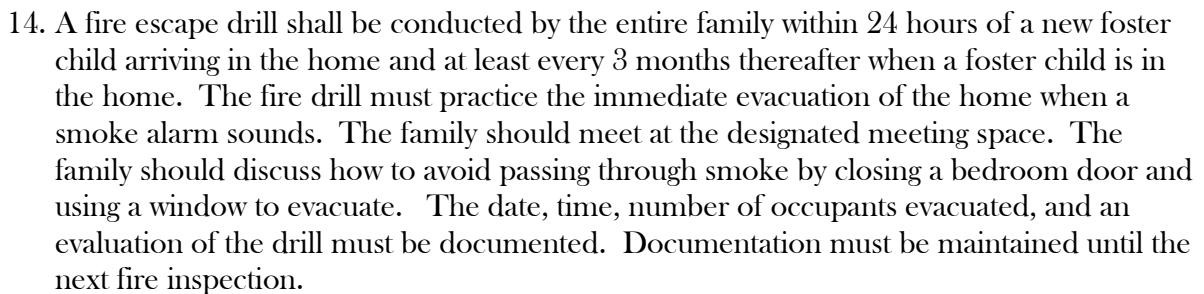
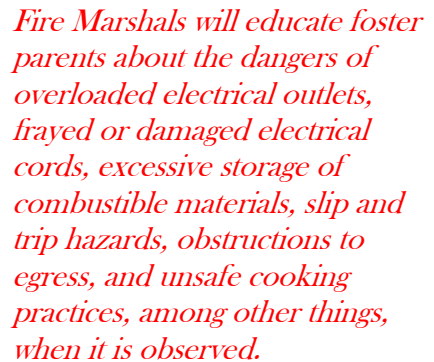
Or

The home must have interconnected smoke alarms.





13. The home shall be free of dangers that constitute an obvious fire hazard, such as faulty electrical cords, overloaded electrical outlets, or an excessive accumulation of combustible materials, flammable liquids, or similar hazards.





Kinship Care Fire Inspection Protocol





Kinship Care Foster Home Fire Inspection Protocol

July 1, 2024



The SC Office of State Fire Marshal will perform inspections of Kinship Care foster and adoption homes upon request of DSS or approved third party providers. The scope of the inspection will be limited to the following items:

(Explanatory comments are in red.)

1. The building or structure must be designed and constructed with the intent to be used as a dwelling (home) per applicable statutes, regulations and state adopted building codes.



The home must be built to the South Carolina Residential Code or HUD standards. Campers or storage buildings converted to homes do not meet these requirements.

2. The home shall have approved address numbers placed in a position that is plainly legible and visible from the street. When numbers placed on the home are not visible from the street, numbers may be required to be placed on a mailbox or address sign that is visible from the street.



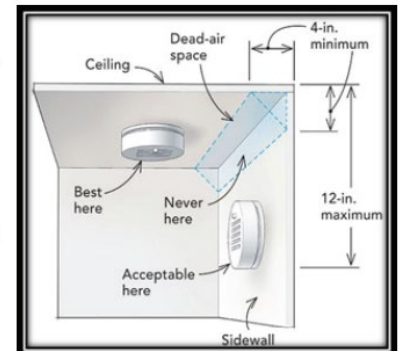
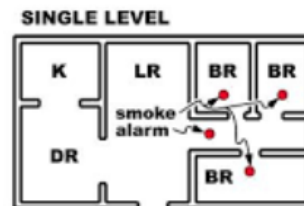
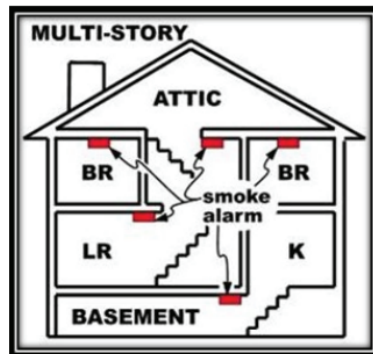


Kinship Care Foster Home Fire Inspection Protocol

July 1, 2024



3. Each foster home shall maintain the means of egress as provided at the time of original construction.
 - a. Hallways, doorways, and walkways must be maintained free of obstructions that could impair its use.
 - b. Opening the door must take no more than 3 separate actions.
 - c. Locks that require keys, tools, or special knowledge to open from the inside of the home are not allowed.
 - d. Security latches, chains, and all other locks must be installed no more than 48" from the floor.
4. Listed smoke alarms shall be installed and maintained in accordance with the manufacturer's installation instructions and in the following locations:
 - a. On the ceiling or wall outside of each separate sleeping area in the immediate vicinity of bedrooms; and
 - b. In each room used for sleeping purposes; and
 - c. In each habitable story within a dwelling.



A "Listed Smoke Alarm" has been tested to ensure it meets minimum industry standards. "Listed" alarms will have either the UL or ETL mark on them.

*To learn more about where to install smoke alarms, watch this video:
<https://youtu.be/8UNzcS02l8w?si=zLrTnf4XLsV6QHZj>*

5. Listed smoke alarms shall be powered from one of the following:
 - a. the electrical system of the home as the primary power source and a battery as a secondary power source.
 - b. a maintenance free, tamper resistant, battery rated for a 10-year life,
 - c. replaceable batteries when the alarm is part of a listed, wireless interconnected smoke alarm system.



Kinship Care Foster Home Fire Inspection Protocol

July 1, 2024



6. At least one portable fire extinguisher with a minimum classification of 2A:10BC shall be located near cooking areas of the home.
 - a. The fire extinguisher should be located in a permanent location, along a path of travel towards an exit, and not so near the stove that you would not be able to reach it if the stove top is on fire.
 - b. The fire extinguisher must be visually inspected at least every 3 months to verify that it is in its permanent location and that the needle is “in the green.”
 - c. The fire extinguisher must be replaced or serviced by a SC Licensed Fire Equipment Dealer at least each 6 years from the manufactured date, and anytime the needle is found to be not “in the green.”

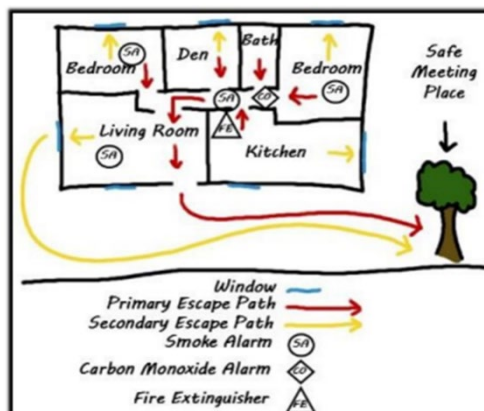


INCORRECT
SIZE

CORRECT
SIZE

The correct size, 2A:10BC, is larger than the 10BC and 1A:10BC fire extinguishers and it typically has a flexible hose and nozzle which requires 2 hands to operate. You can operate the fire extinguisher by remembering the acronym PASS- Pull, Aim, Squeeze and Sweep. To watch a video on how to operate a fire extinguisher, click here: <https://youtu.be/GVBamXXVD30?si=jy3ryU4Ii-WAmLVC>

7. A fire escape plan consisting of a sketch of the floor plan of the home that shows 2 ways out of each bedroom and a safe meeting place outside, must be developed. The plan must be posted in the home where it can easily be viewed.



Plan two ways out of every room, including windows as a method of escape. Discuss closing a bedroom door and going out of the window to avoid passing through the smoke.

Identify a meeting place outside of the home. Discuss not going back into the home to look for other people, valuables, or pets.

Mark the locations of smoke alarms, carbon monoxide alarms, and fire extinguisher.



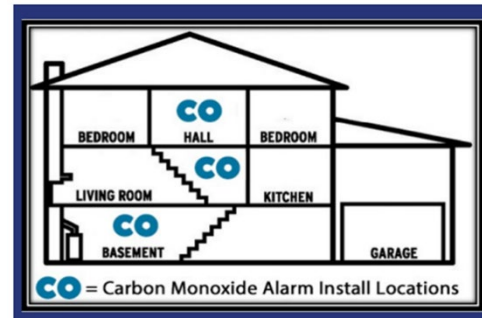
Kinship Care Foster Home Fire Inspection Protocol

July 1, 2024



8. If the home has fuel-fired appliances, a fireplace, wood stove, or an attached garage, then listed carbon monoxide alarms shall be installed and maintained outside of each separate sleeping area and on each level of the home. If a bedroom contains a source of carbon monoxide, then a listed carbon monoxide alarm must be installed in that bedroom also.

Carbon Monoxide Alarms are required when the home contains a source of carbon monoxide, such as a fireplace, wood stove, fuel-fired (gas) appliances, or an attached garage.



9. (Initial Inspection Only)
The following health and sanitation requirements will be verified:
 - a. Private well water shall be negative for Coliform and E.Coli.
 - b. There must be no evidence of septic hazards.
 - c. Pet inoculations are required for dogs, cats, and ferrets.